

FISHER MIDDLE SCHOOL 2024 PAINT SCOPE

- PAINT ALL PAINTABLE DOORS, FRAMES, STOREFRONTS AND MULLIONS, BOTH SIDES, THROUGHOUT FACILITY. PREPARE SURFACES FOR PROPER ADHESION PRIOR TO PAINTING.
- WHERE APPLICABLE, REPAIR ALL PRE-CAST JOINTS, MINOR BLOCK JOINTS AND SHEETROCK CRACKS WITHIN PAINTED AREAS. PATCH ALL HOLES WITHOUT SCREWS OR HANGING EQUIPMENT.
- PROTECT ALL MURALS UNLESS OTHERWISE NOTED.
- PROTECT ALL PROMETHEAN BOARDS AND PARTS. DO NOT DISASSEMBLE ANY PARTS.
- PAINT ALL PAINTABLE INTERIOR SURFACES INCLUDING CEILINGS, UNLESS OTHERWISE NOTED
- START AND STOP ALL ACCENT COLORS @ INSIDE CORNERS, UNLESS OTHERWISE NOTED
- NEW NEUTRAL = SW 7071 GRAY SCREEN
- ACCENT 1 = SW 6966 BLUE BLOOD
- ACCENT 2 = SW 7588 SHOWSTOPER
- ACCENT 3 = SW 6178 CLARY SAGE
- ACCENT 4 = SW 7073 NETWORK GRAY
- ACCENT 5 = SW 7074 SOFTWARE
- EXTERIOR:
 - PAINT BALCONIES WHERE PAINTED TO MATCH EXISTING – WALLS, COLUMNS, CEILINGS
 - PAINT CANOPY STRUCTURE STEEL AT FRONT ENTRANCE TO MATCH EXISTING
 - PAINT ALL HOLLOW METAL DOORS AND FRAMES TO MATCH EXISTING
 - PAINT STORAGE BUILDING HOLLOW METAL DOORS AND FRAMES TO MATCH EXISTING
 - DO NOT PAINT STEEL AT CANOPY AT COURTYARD
- ALL WALLS TO MATCH EXISTING EXTENT OF ACCENTS USING NEW NEUTRAL, UNLESS OTHERWISE NOTED
- ALL INTERIOR HOLLOW METAL FRAMES AND DOORS TO MATCH EXISTING
- ALL OFFICES TO BE NEW NEUTRAL WITH ACCENT 1 @ EXISTING ACCENT WALL, UNLESS OTHERWISE NOTED
- ALL CLASSROOMS TO BE NEW NEUTRAL, UNLESS OTHERWISE NOTED
- ALL SINGLE OCCUPANT RESTROOMS TO BE NEW NEUTRAL WITH ACCENT 1 AT EXISTING ACCENT WALL

- ① ACCENT 2 WHERE SHOWN
- ② PAINT SUSPENDED CEILING CLOUDS; GREEN = BLACK, RED = ACCENT 2, BLUE = ACCENT 3, BLUE = ACCENT 4
- ③ MEDIA CENTER: MATCH EXISTING EXTENT NEUTRAL AND ACCENTS WITH NEW NEUTRAL & WHITE; DO NOT PAINT CEILINGS
- ④ ACCENT 3 WHERE SHOWN
- ⑤ ACCENT 4 WHERE SHOWN
- ⑥ MATCH EXISTING ACCENTS WITH NEW BLUE, RED, GREEN INCLUDING ACCENT SOFFIT; DO NOT PAINT CEILINGS
- ⑦ ACCENT 1 WHERE SHOWN
- ⑧ CHANGE GREEN ACCENT IN GROUP RESTROOMS TO NEW NEUTRAL, ALL FLOORS
- ⑨ PAINT GREEN SCREEN; PAINT RUBBER BASE ON WALL TO MATCH GREEN SCREEN
- ⑩ MATCH TOP WHITE ACCENT; FIRST PARTIAL BLOCK PAINT ACCENT 5; CONCRETE PANEL BELOW ACCENT 2 TO JOINT; LOWER CONCRETE PANEL NEW NEUTRAL
- ⑪ PAINT EXISTING WHITE CEILING WHITE; TOP GRAY ABOVE UPPER JOINT = ACCENT 2; NEXT LARGE PORTION = ACCENT 5; BOTTOM PORTION ACCENT 4; INSETS AT DOORS AND DRINKING FOUNTAINS ACCENT 5
- ⑫ PAINT STAGE FRONT BLACK; GYPSUM WALL BOARD AREA AROUND STAGE PAINT ACCENT 5
- ⑬ MATCH ACCENT SCHEME DESCRIBED IN ⑩
- ⑭ PAINT SMALL SOFFIT ACCENT 2, VERTICAL & HORIZONTAL FACES
- ⑮ CAFETERIA: EXISTING BLUE = ACCENT 5; EXISTING GREEN = ACCENT 4; CLERESTORY VERTICAL SURFACES = ACCENT 2; CEILINGS CEILING WHITE; WALL LEFT OF SERVING LINE TO DOUBLE DOORS = ACCENT 5
- ⑯ STAIRWELLS: PAINT HANDRAILS AND VERTICAL RAILS DOWN TO STRINGER ACCENT 2; STRINGER STEEL AND ALL OTHER STEEL MATCH EXISTING; LANDING WALL, PAINT 3 VERTICAL STRIPES AS DESCRIBED: ALIGN ACCENTS FLOOR TO CEILING WITH STAIR TREAD CENTER – NEW NEUTRAL ON LEFT, ACCENT 4 MIDDLE, ACCENT 5 ON RIGHT

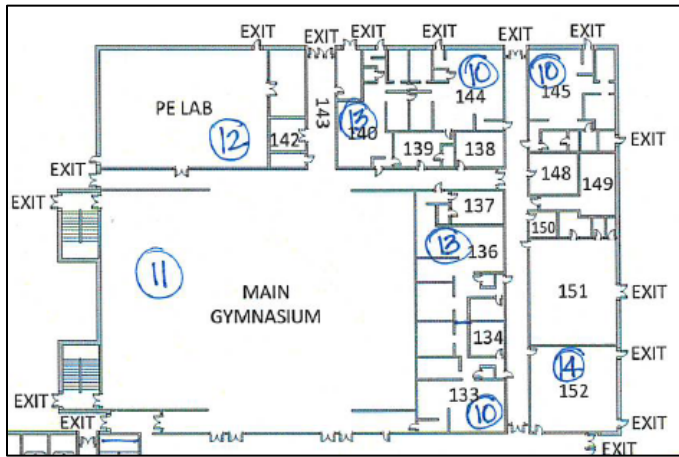
FISHER MS PRICING BREAKOUT DESCRIPTION (SEE BID FORM)	
Scopes described below may be awarded in any combination Scopes described below will not be awarded to multiple contractors	
Base Scope	Entirety of scope described above EXCEPT for items requested as alternates.
Alternate #1: Ceilings	All NON-SHEETROCK ceilings described in scope above including decking, steel structure, and ductwork unless otherwise noted. (Any sheetrock ceilings to be base scope, unless noted otherwise)
Alternate #2: Exterior	All scope described as exterior above EXCEPT for hollow metal doors and frames (include in base scope)
Alternate #3: Cafeteria	Scope described for cafeteria above including kitchen and offices/rooms located in that space
Mobilization DEDUCT	Provide DEDUCT mobilization value to be applied should multiple scopes be awarded

Greer High School 2024 Paint Scope – CORE SPACES

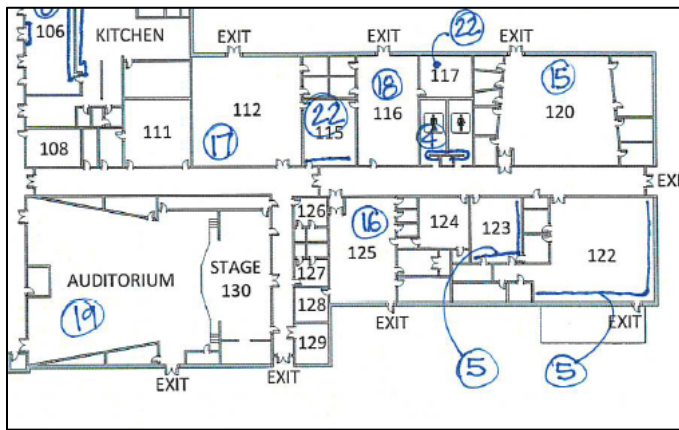
- PAINT ALL paintable doors, frames, storefronts and mullions, both sides, throughout facility. Prepare surfaces for proper adhesion prior to painting.
- Where applicable, repair all pre-cast joints, minor block joints and sheetrock cracks within painted areas. Patch all holes without screws or hanging equipment.
- Protect all murals unless otherwise noted.
- Protect all prometean boards and parts. Do not disassemble any parts.
- PAINT ALL PAINTABLE INTERIOR SURFACES INCLUDING CEILINGS, UNLESS OTHERWISE NOTED
- START AND STOP ALL ACCENT COLORS @ INSIDE CORNERS, UNLESS OTHERWISE NOTED
- NEW NEUTRAL = SW 7010 WHITE DUCK
- ACCENT 1 = SW 7663 MONORAIL SILVER
- ACCENT 2 = SW 7659 GRIS
- ACCENT 3 = SW 6390 BOSC PEAR
- ACCENT 4 = SW 6258 TRICORN BLACK
- EXTERIOR:
 - PAINT ALL HOLLOW METAL DOORS AND FRAMES SW 6258 TRICORN BLACK
- ALL WALLS TO BE NEW NEUTRAL, UNLESS OTHERWISE NOTED
- ALL INTERIOR HOLLOW METAL FRAMES AND DOORS TO MATCH EXISTING
- ALL STAIRWELLS: ACCENT 1 AT LANDING WALL; ACCENT STRIPING THROUGHOUT
- ACCENT STRIPING IN GROUP TOILETS AND STAIRS: TOP HALF OF TOP BLOCK NEW NEUTRAL; BOTTOM HALF OF TOP BLOCK ACCENT 3; NEXT FULL BLOCK ACCENT 4
- ACCENT STRIPING ON CORRIDOR WALLS: REPLACE GOLD STRIPING WITH ACCENT 3; REPLACE GREEN AND PURPLE STRIPING WITH ACCENT 4 – DO NOT LEAVE GAP; STOP STRIPING 8” FROM EACH END
- DO NOT PAINT CLASSROOMS, UNLESS OTHERWISE NOTED
- DO NOT PAINT SINGLE OCCUPANT RESTROOMS
- DO NOT PAINT OFFICES, UNLESS OTHERWISE NOTED
- INCLUDE PAINTING OF FINE ARTS WING – ALL SPACES INCLUDING CLASSROOMS & OFFICES (SEE DIAGRAM)
- INCLUDE PAINTING OF ATHLETICS WING – ALL SPACES INCLUDING CLASSROOMS & OFFICES (SEE DIAGRAM)
- INCLUDE \$20,000 ALLOWANCE TO REPLACE VINYL DECALS/LETTERING & TOUCH UP OR REPAINT YELLOW JACKET MURALS WHERE BEING COVERED
- ON CAMPUS ATHLETIC FACILITIES:
 - TICKET BOOTH – PAINT DOOR BLACK & ALL HOLLOW METAL FRAMES; PAINT INSIDE NEW NEUTRAL
 - CONCESSIONS – PAINT ALL RAILS BLACK; PAINT INSIDE NEW NEUTRAL
 - RESTROOMS – PAINT WOOD TRIM AT TOP NEW NEUTRAL; PARTIAL AND FULL BLOCK BELOW GOLD
 - SOFTBALL PRESSBOX - ALL DOORS AND FRAMES BLACK; NEW NEUTRAL EXTERIOR WITH ACCENT STRIPING AT WINDOW – GOLD STRIPE EXTENT OF WINDOW HEIGHT AROUND PERIMETER, 12” BLACK STRIPE ABOVE WINDOW AROUND PERMINATER; INSIDE NEW NEUTRAL; ALL STEEL OF STAIRS NEW NEUTRAL
 - SOFTBALL DUGOUT – NO PAINT
 - SOFTBALL STORAGE – PAINT DOORS AND FRAMES, AND WOOD AT DOOR HEAD BLACK
 - BASEBALL PRESSBOX – PAINT BLACK WITH GOLD STRIPE (2 BLOCKS); PAINT ALL WOOD DOORS/TRIM/WINDWOS BLACK; INSIDE NEW NEUTRAL
 - BASEBALL DUGOUT – PAINT GOLD STRIPE ACCENT 3
- OFF CAMPUS FOOTBALL STADIUM (8 BUILDINGS)
 - PAINT ALL BUILDINGS BASE ACCENT 3; NEXT BLOCK PAINT BLACK; ALL ELSE ACCENT 1
 - ALL BUILDINGS PAINT HOLLOW METAL DOORS AND FRAMES BLACK
 - ALL BUILDINGS PAINT INTERIOR WHITE DUCK
 - RESTROOMS: TOP WOOD TRIM BLACK; PARTIAL BLOCK BELOW ACCENT 3; ALL ELSE WHITE DUCK

- PRESS BOX: PAINT EXTERIOR DOOR & FRAMES BLACK; PAINT INTERIOR FRAMES BLACK; NO PAINT ON WALLS

- ① DISPLAY CASE - PAINT FRAMES BLACK
- ② GREEN SCREEN; INCLUDE COLUMN & BUMP OUT
- ③ MEDIA CENTER: PAINT COLUMNS ACCENT 3; INCLUDE PAINTING OF OFFICES AND ROOMS – ACCENT 1 AT WALL ACROSS DOOR
- ④ GROUP TOILETS: ACCENT 2 WHERE SHOWN; ACCENT STRIPING THROUGHOUT; CEILINGS NEW NEUTRAL
- ⑤ ACCENT 1 WHERE SHOWN
- ⑥ MATCH ACCENT STRIPING OF STAIRS AND GROUP TOILETS
- ⑦ STAIRS: ACCENT 1 WHERE SHOWN; ACCENT STRIPING THROUGHOUT; CHANGE HANDRAILS TO ACCENT 4
- ⑧ KITCHEN: ACCENT 2 WHERE SHOWN; 2 DOORS TO CAFETERIA MATCH ACCENT SIZE AND LOCATION – CHANGE TO ACCENT 3 AND ACCENT 4; PAINT OVER STRIPES ON SIDE WALLS; PAINT ALL EXTERIOR AT DOCK AREA INCLUDING CEILINGS
- ⑨ PAINT DOWNSPOUT TO MATCH EXISTING
- ⑩ ATHLETIC LOCKER ROOMS: PREP AND PAINT LOCKERS ACCENT 4; MATCH STRIPE AND WAINSCOT WITH NEW GOLD AND BLACK - @ TOILET AREA WRAP TO FIRST INSIDE CORNER STOP
- ⑪ GYMNASIUM: PAINT CEILING AND STRUCTURE, AND DUCT WORK NEW NEUTRAL; COVER ALL YELLOW JACKETS AND LETTERING; REPAINT STRIPING AND DIAMONDS WITH NEW BLACK AND GOLD
- ⑫ PAINT 10 BLOCKS DOWN ACCENT 3; NEXT 2 BLOCKS DOWN ACCENT 4; NEW NEUTRAL ALL ELSE INCLUDE CEILINGS, STRUCTURE, AND DUCTWORK
- ⑬ GYM LOCKER ROOMS: PAINT ALL LOCKERS BLACK; ALL ELSE NEW NEUTRAL
- ⑭ ADD ONLY BLACK WAINSCOT AND GOLD STRIPE
- ⑮ REMOVE AND REINSTALL ACOUSTIC PANELS; TOP 3 FULL BLOCKS PAINT BLACK, GOLD, BLACK
- ⑯ ADD STRIPE @ TOP OF WALL - TOP HALF OF TOP BLOCK NEW NEUTRAL; BOTTOM HALF OF TOP BLOCK GOLD; NEXT FULL BLOCK BLACK
- ⑰ REPAINT ALL TO MATCH EXISTING; STRIPES TO MATCH ALL; YELLOW CHANGE TO ACCENT 3; GREY WAINSCOT = ACCENT 2; BLACK STRIPE CHANGE TO ACCENT 3
- ⑱ NEW NEUTRAL THROUGHOUT; COVER BLUE STRIPE; FIRST FIVE BLOCKS ACCENT 2; NEXT BLOCK ACCENT 3
- ⑲ AUDITORIUM: PAINT STAGE FLOOR BLACK – ENSURE PROPER PAINT AND PREP FOR COVERING WOOD FLOOR; PAINT STAGE FRONT BLACK WHERE CARPETING CURRENTLY IS; MATCH EXISTING COLOR AND EXTENTS; TAN CURVE @ GHS LETTERS CHANGE TO BLACK, PAINT AROUND LETTERS; PAINT BACK OF STAGE BLACK; PAINT SOFFIT @ ENTRY DOORS TO MATCH EXISTING; PAINT RAILING BLACK AT MEZZANINE
- ⑳ ACCENT WHERE SHOWN; OFFICES TO MATCH CLASSROOM WITH ACCENT ON WALL OPPOSITE DOOR
- ②① ALL NEUTRAL EXCEPT ISLAND TO BE ACCENT 1; 1 ½ STRIPE @ TOP OF ISLAND ACCENT 2
- ②② ACCENT 1 THROUGHOUT
- ②③ PAINT SMALL SOFFIT BLACK



Athletic Wing



Fine Arts Wing

GREER HS PRICING BREAKOUT DESCRIPTION (SEE BID FORM)	
Scopes described below may be awarded in any combination Scopes described below will not be awarded to multiple contractors	
Base Scope	Entirety of scope described above EXCEPT for items requested as alternates. Include allowance.
Alternate #1: Ceilings	All NON-SHEETROCK ceilings described in scope above including decking, steel structure, and ductwork, unless otherwise noted. (Any sheetrock ceilings to be base scope, unless noted otherwise)
Alternate #2: Athletic Wing Classrooms	Includes all classrooms & offices within Athletic Wing (Core spaces within athletic wing to be in base scope)
Alternate #3: Fine Arts Wing Classrooms	Includes all classrooms & offices within Fine Arts Wing (Core spaces within fine arts wing to be in base scope)
Alternate #4: On Campus Athletic Facilities	Includes all on campus athletic facilities described above
Alternate #5: Off Campus Athletic Facilities	Includes all off campus athletic facilities described above
Alternate #6: Gym Lockers	Includes all lockers in gym locker rooms described above
Mobilization DEDUCT	Provide DEDUCT mobilization value to be applied should multiple scopes be awarded

Grove Elementary School 2024 Paint Scope

- PAINT ALL paintable doors, frames, storefronts and mullions, both sides, throughout facility. Prepare surfaces for proper adhesion prior to painting.
- Where applicable, repair all pre-cast joints, minor block joints and sheetrock cracks within painted areas. Patch all holes without screws or hanging equipment.
- Protect all murals unless otherwise noted.
- Protect all promethean boards and parts. Do not disassemble any parts.
- PAINT ALL PAINTABLE INTERIOR SURFACES INCLUDING CEILINGS, UNLESS OTHERWISE NOTED
- START AND STOP ALL ACCENT COLORS @ INSIDE CORNERS, UNLESS OTHERWISE NOTED
- NEW NEUTRAL = SW 7010 WHITE DUCK
- ACCENT 1 = SW 6247 KRYPTON
- ACCENT 2 = SW 9148 SMOKY AZURITE
- ACCENT 3 = SW 6501 MANITOU BLUE
- ACCENT 4 = SW 6431 LEAPFROG
- ACCENT 5 = SW 9018 HONEY BEE
- ACCENT 6 = SW 9074 GENTLE GRAPE
- EXTERIOR:
 - PAINT ALL HOLLOW METAL DOORS AND FRAMES SW 7527 NANTUCKET DUNE
 - PAINT ALL DOWNSPOUT BOOTS SW 7058 URBANE BRONZE
- ALL WALLS TO BE NEW NEUTRAL, UNLESS OTHERWISE NOTED
- ALL INTERIOR HOLLOW METAL FRAMES AND DOORS TO MATCH EXISTING
- ALL OFFICES TO BE NEW NEUTRAL WITH ACCENT 1 @ EXISTING ACCENT WALL OR @ WALL OPPOSITE DOOR IF NOT EXISTING, UNLESS OTHERWISE NOTED
- ALL CLASSROOMS TO BE NEW NEUTRAL WITH ACCENT 1 @ WALL OPPOSITE DOOR, UNLESS OTHERWISE NOTED
- ALL SINGLE OCCUPANT RESTROOMS TO BE NEW NEUTRAL
- REPAIR EXPANSION JOINT DAMAGE AT PRECAST WALL JOINTS USING PROPER SEALANT SPECIFIED FOR APPLICATION; REPAINT TO MATCH WALL COLOR

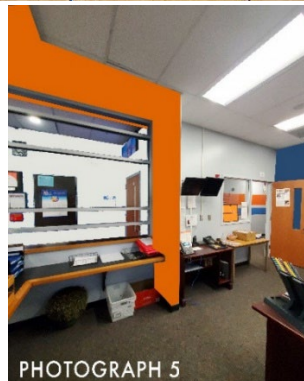
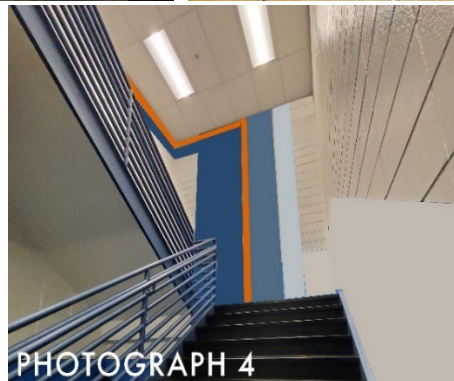
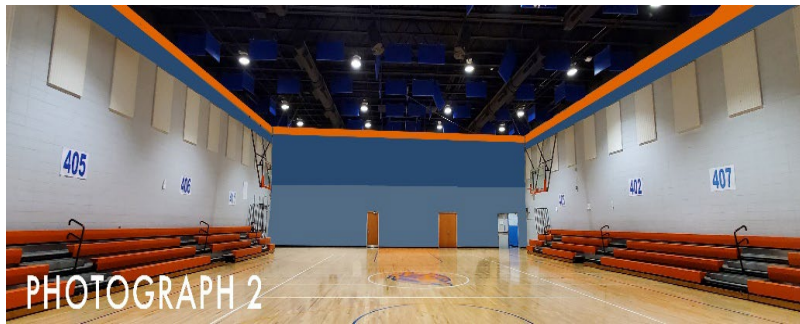
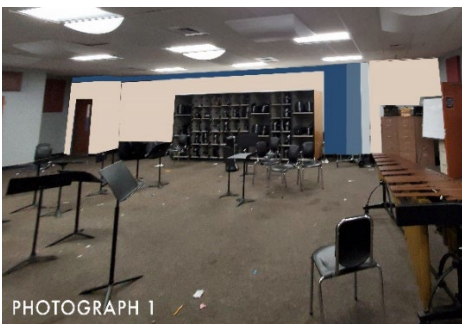
- ① CAFETORIUM: PAINT SOFFIT ABOVE STAGE BLACK HORIZONTAL AND VERTICAL SURFACES; PAINT STAGE FRONT BLACK; PAINT HANDRAILS BLACK; PAINT CEILING NEW NEUTRAL INCLUDING EXISTING BLUE ROOF STRUCTURE; ACCENT 1 AT EXISTING BLUE ACCENTS
- ② ACCENT 1 WHERE SHOWN
- ③ ACCENT 2 WHERE SHOWN; LOW WALLS AT SERVING AREA PAINT BLACK
- ④ PAINT STORAGE BUILDING DOORS 7527 NANTUCKET DUNE; PAINT ALL STEEL WHITE AT COVERED AREA VERTICAL AND HORIZONTAL SURFACES, DO NOT PAINT DECK
- ⑤ PAINT COLUMNS ACCENT 2
- ⑥ GYMNASIUM: MATCH EXTENT OF EXISTING COLORS; CHANGE BLUE TO ACCENT 2; COVER ROUND DOTS; NEW NEUTRAL THROUGHOUT INCLUDING CEILING, SOUND PANELS, AND DUCTWORK; REMOVE BANNERS ON SOUND PANELS AND REINSTALL
- ⑦ ACCENT 2 WHERE SHOWN
- ⑧ ACCENT 2 AT COLUMNS AS SHOWN; 2 SOFFIT AREAS ACCENT 2 AS SHOWN
- ⑨ MEDIA CENTER: ACCENT 1 WHERE SHOWN; PAINT EXISTING RED COLUMNS ACCENT 2; CEILING AND DUCTWORK NEW NEUTRAL
- ⑩ PAINT GREEN SCREEN WHERE SHOWN
- ⑪ NOT USED
- ⑫ NEW NEUTRAL THROUGHOUT

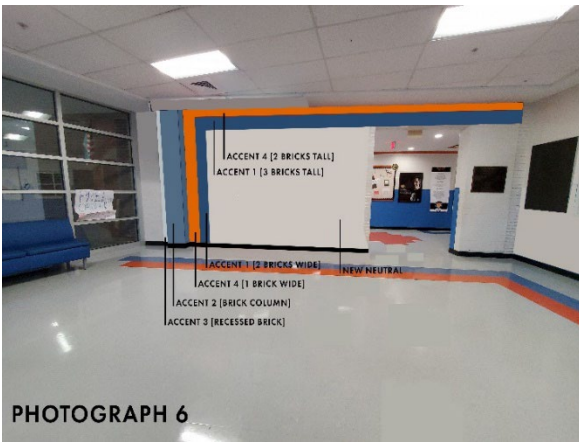
- ⑬ COVER MURAL
- ⑭ WRAP ACCENT STRIPE AROUND WALL AT FIRST INSIDE CORNER
- ⑮ PAINT ALL HOLLOW METAL DOORS; PAINT STRUCTURE CEILING WHITE INCLUDING COLUMNS, CEILING, CONDUIT, AND SPRINKLER PIPE
- ⑯ STAIRWELLS: ACCENT 1 WHERE SHOWN; PAINT STEEL TO MATCH HOLLOW METAL FRAMES; PAINT EXISTING BLUE HANDRAILS BLACK
- ⑰ NEW NEUTRAL THROUGHOUT; ACCENT 6 AT TOP BLOCK AND CONTUINE ON SHEET ROCK BULKHEADS HORIZONTAL AND VERTICAL SIDES; CONTINUE STRIPE AT SHEETROCK CLASSROOM INSETS; PAINT BACK INSET WALL ACCENT 6 AS SHOWN
- ⑱ NEW NEUTRAL THROUGHOUT; ACCENT 3 AT TOP BLOCK AND CONTUINE ON SHEET ROCK BULKHEADS HORIZONTAL AND VERTICAL SIDES; CONTINUE STRIPE AT SHEETROCK CLASSROOM INSETS; PAINT BACK INSET WALL ACCENT 3 AS SHOWN
- ⑲ NEW NEUTRAL THROUGHOUT; ACCENT 4 AT TOP BLOCK AND CONTUINE ON SHEET ROCK BULKHEADS HORIZONTAL AND VERTICAL SIDES; CONTINUE STRIPE AT SHEETROCK CLASSROOM INSETS; PAINT BACK INSET WALL ACCENT 4 AS SHOWN; STOP STRIPE AT COMMON SPACE WHERE INDICATED
- ⑳ NEW NEUTRAL THROUGHOUT; ACCENT 5 AT TOP BLOCK AND CONTUINE ON SHEET ROCK BULKHEADS HORIZONTAL AND VERTICAL SIDES; CONTINUE STRIPE AT SHEETROCK CLASSROOM INSETS; PAINT BACK INSET WALL ACCENT 5 AS SHOWN; STOP STRIPE AT DOUBLE DOORS TO COMMON SPACE

<p>GROVE ES PRICING BREAKOUT DESCRIPTION (SEE BID FORM) Scopes described below may be awarded in any combination Scopes described below will not be awarded to multiple contractors</p>
<p>Base Scope Entirety of scope described above EXCEPT for items requested as alternates.</p>
<p>Alternate #1: Cafeteria Ceilings All NON-SHEETROCK ceilings in cafeteria described in scope above including decking, steel structure, and ductwork, unless otherwise noted. (Any sheetrock ceilings to be base scope, unless noted otherwise)</p>
<p>Alternate #2: Gymnasium Ceilings All NON-SHEETROCK ceilings described in scope above including decking & steel structure, unless otherwise noted. (Any sheetrock ceilings to be base scope, unless noted otherwise)</p>
<p>Alternate #3: Gymnasium Ductwork Includes ductwork in gymnasium as described in scope above</p>
<p>Mobilization DEDUCT Provide DEDUCT mobilization value to be applied should multiple scopes be awarded</p>

Lakeview Middle School 2024 Paint Scope

- PAINT ALL PAINTABLE DOORS, FRAMES, STOREFRONTS AND MULLIONS, BOTH SIDES, THROUGHOUT FACILITY. PREPARE SURFACES FOR PROPER ADHESION PRIOR TO PAINTING.
- WHERE APPLICABLE, REPAIR ALL PRE-CAST JOINTS, MINOR BLOCK JOINTS AND SHEETROCK CRACKS WITHIN PAINTED AREAS. PATCH ALL HOLES WITHOUT SCREWS OR HANGING EQUIPMENT.
- PAINT OVER ALL MURALS
- PROTECT ALL PROMETHEAN BOARDS AND PARTS. DO NOT DISASSEMBLE ANY PARTS.
- PAINT ALL PAINTABLE INTERIOR SURFACES INCLUDING CEILINGS, UNLESS OTHERWISE NOTED
- START AND STOP ALL ACCENT COLORS @ INSIDE CORNERS, UNLESS OTHERWISE NOTED
- NEW NEUTRAL = SW 7010 WHITE DUCK
- NEW HOLLOW METAL DOOR & FRAME COLOR = SW 9165 GOSSAMER VEIL
- ACCENT 1 = SW 6531 INDIGO
- ACCENT 2 = SW 6523 DENIM
- ACCENT 3 = SW 6247 KRYPTON
- ACCENT 4 = SW 6886 INVIGORATE
- EXTERIOR:
 - PAINT ALL TAN MATERIAL @ TOP OF ORIGINAL BUILDING SW 6195 GOSSAMER VEIL
 - PAINT ALL HOLLOW METAL DOORS AND FRAMES SW 6195 GOSSAMER VEIL
 - COURTYARD HANDRAILS ACCENT 1
- ALL WALLS TO BE NEW NEUTRAL, UNLESS OTHERWISE NOTED
- ALL OFFICES TO BE NEW NEUTRAL WITH ACCENT 3 @ WALL OPPOSITE DOOR, UNLESS OTHERWISE NOTED
- ALL CLASSROOMS TO BE NEW NEUTRAL WITH ACCENT 3 @ EXTERIOR WALL, EXCEPT WHERE SHOWN ON PLAN
- ALL SINGLE OCCUPANT RESTROOMS TO BE NEW NEUTRAL
- PAINT ALL STORAGE ROOMS AND CLOSETS THAT ARE ADJOINING CLASSROOMS (NEW NEUTRAL)
- ALL CLASSROOM CORRIDORS: TOP PORTION OF BLOCK = ACCENT 4; NEXT FULL BLOCK = ACCENT 1. FOR DRYWALL CORRIDORS, MATCH HEIGHT OF COURSES DESCRIBED ABOVE. CONTINUE STRIPES AROUND COLUMNS.
- ALL LOCKERS ON CORRIDORS WILL BE REMOVED BY OTHERS; PAINT NEW NEUTRAL ON WALL LOCATIONS WHERE LOCKERS ARE TO BE REMOVED





- ① PAINT STAGE FRONT BLACK. PAINT BACK OF STAGE WALLS NEW NEUTRAL.
- ② CURVED SOFFIT @ CIRCULATION DESK: VERTICAL FACES ONLY TO BE ACCENT 4. ALL OTHER CEILING COMPONENTS TO BE CEILING WHITE. ACCENT 2 WHERE SHOWN ON PLAN.
- ③ PAINT TOP PARTIAL BLOCK ACCENT 4; PAINT NEXT BLOCK ACCENT 1
- ④ ALL WALLS ACCENT 3
- ⑤ NEW NEUTRAL THROUGHOUT; ACCENTS WHERE INDICATED ON PLAN AND AS SHOWN IN PHOTOGRAPH 1; ACCENT COLORS 3, 2, 1
- ⑥ MIRROR ACCENT SCHEME FROM #5
- ⑦ COVER EXISTING MURAL. PAINT NEUTRAL THROUGHOUT WITH ACCENT WALL WHERE SHOWN AND PER PHOTOGRAPH 2.
 - ALL WALLS: PAINT TOP 1 BLOCK ACCENT 4; PAINT NEXT 4 BLOCKS ACCENT 1
 - FOR ACCENT WALL: PAINT TOP 1 BLOCK ACCENT 4; PAINT NEXT 16 BLOCKS ACCENT 1; PAINT REMAINDER OF BLOCKS ACCENT 2
 - PAINT CEILING AND DUCTWORK BLACK.
- ⑧ PAINT NEUTRAL THROUGHOUT – DO NOT PAINT PRECAST PANELS, EXCEPT AS NOTED BELOW AND AS SHOWN ON PHOTOGRAPH 3. PAINT ALL HANDRAILS, STEEL FOR STAIRS AND EXISTING BLUE COLUMNS ACCENT 1.
- ⑨ PAINT ACCENT WALL WHERE INDICATED ON PLAN, SEE PHOTOGRAPH 4. OTHER 3 WALLS: PAINT TOP BLOCK ACCENT 4; PAINT NEXT TWO BLOCKS ACCENT 1. HANDRAILS ACCENT 1.
- ⑩ PAINT ACCENT STRIPES @ TOP OF WALLS; ACCENT 4 & ACCENT 1
- ⑪ PAINT NEW NEUTRAL THROUGHOUT; ACCENTS PER PHOTOGRAPH 6
- ⑫ PAINT ACCENT 4 AT TOP BLOCK; ACCENT 1 AT NEXT TWO BLOCKS; ACCENT 2 FROM THERE DOWN
- ⑬ PAINT TOP PARTIAL BLOCK ACCENT 4; PAINT NEXT BLOCK ACCENT 1; DO NOT PAINT UNPAINTED CONCRETE LOCKER BASE; PAINT BLOCK WALL UNDER BASE NEW NEUTRAL
- ⑭ PAINT ACCENT 2 WHERE SHOWN
- ⑮ PAINT NEUTRAL THROUGHOUT; PAINT ACCENTS PER PHOTOGRAPH 5
- ⑯ PAINT CORRIDOR STRIPES ON THESE WALLS; WALL BEHIND DRINKING FOUNTAINS, PAINT ACCENT 1
- ⑰ PAINT ACCENT WHERE SHOWN: ACCENT 4 @ TOP 4" OF WALL; ACCENT 1 @ 8" BELOW THAT; ACCENT 2 AT REMAINDER OF WALL

LAKEVIEW MS PRICING BREAKOUT DESCRIPTION (SEE BID FORM)

Scopes described below may be awarded in any combination
Scopes described below will not be awarded to multiple contractors

Base Scope

Entirety of scope described above EXCEPT for items requested as alternates.

Alternate #1: Ceilings

All NON-SHEETROCK ceilings including decking, steel structure, and ductwork, unless otherwise noted. (Any sheetrock ceilings to be base scope, unless noted otherwise)

Mobilization DEDUCT

Provide DEDUCT mobilization value to be applied should multiple scopes be awarded

Monaview Elementary School 2024 Paint Scope

- PAINT ALL PAINTABLE DOORS, FRAMES, STOREFRONTS AND MULLIONS, BOTH SIDES, THROUGHOUT FACILITY. PREPARE SURFACES FOR PROPER ADHESION PRIOR TO PAINTING.
- WHERE APPLICABLE, REPAIR ALL PRE-CAST JOINTS, MINOR BLOCK JOINTS AND SHEETROCK CRACKS WITHIN PAINTED AREAS. PATCH ALL HOLES WITHOUT SCREWS OR HANGING EQUIPMENT.
- PROTECT ALL MURALS UNLESS OTHERWISE NOTED. EXCEPT AS NOTED BELOW, PAINT TO A HARD EDGE AROUND EACH MURAL.
- PROTECT ALL PROMETHEAN BOARDS AND PARTS. DO NOT DISASSEMBLE ANY PARTS.
- PAINT ALL PAINTABLE INTERIOR SURFACES INCLUDING CEILINGS, UNLESS OTHERWISE NOTED
- START AND STOP ALL ACCENT COLORS @ INSIDE CORNERS, UNLESS OTHERWISE NOTED
- PAINT ALL SHEETROCK CEILINGS CEILING WHITE
- NEW NEUTRAL = SW 7010 WHITE DUCK
- ACCENT 1 = SW 6247 KRYPTON
- ACCENT 2 = SW 6811 HONORABLE BLUE
- ACCENT 3 = SW 6871 POSITIVE RED
- ACCENT 4 = SW 6901 DAFFODIL
- WALL BETWEEN LOBBY & RECEPTION: PAINT VERTICAL & HORIZONTAL SURFACES ACCENT 1
- ALL WALLS TO BE NEW NEUTRAL, UNLESS OTHERWISE NOTED
- ALL INTERIOR AND EXTERIOR HOLLOW METAL FRAMES AND DOORS TO MATCH EXISTING
- ALL STAIRWELLS: EXCEPT WHERE NOTED OTHERWISE, PAINT NEW NEUTRAL THROUGHOUT WITH ACCENT 1 @ SHORT EXTERIOR WALL WITH DOOR, BOTH FLOORS; PAINT ALL STEEL STAIR COMPONENTS TO MATCH EXISTING
- EXTERIOR STORAGE BUILDING – PAINT DOORS TO MATCH REMAINDER OF SCHOOL
- ALL OFFICES TO BE NEW NEUTRAL WITH ACCENT 1 @ WALL OPPOSITE DOOR, UNLESS OTHERWISE NOTED
- ALL CLASSROOMS & INSTRUCTIONAL SPACES TO BE NEW NEUTRAL WITH ACCENT 1 @ EXTERIOR WALL, UNLESS OTHERWISE NOTED; IF INTERIOR ROOM, ACCENT WALL OPPOSITE DOOR
- ALL SINGLE OCCUPANT RESTROOMS TO BE NEW NEUTRAL
- MAIN ENTRY CORRIDOR AND CAFETERIA HALLWAY: PAINT STEEL ACCENT 3; PAINT EXISTING SOFFIT ACCENT 2, HORIZONTAL AND VERTICAL SIDES; PAINT ALL OTHER WALLS WITHOUT MURALS NEW NEUTRAL; PAINT ALL SOUND PANELS NEW NEUTRAL

- ① DO NOT PAINT THIS SECTION OF WALL
- ② PAINT ALL WALLS ACCENT 1
- ③ NOT USED
- ④ PAINT ACCENT 3 WHERE SHOWN
- ⑤ PAINT ACCENT 1 WHERE SHOWN
- ⑥ NEW NEUTRAL THROUGHOUT
- ⑦ PAINT OVER MURAL
- ⑧ PAINT ACCENT 1 @ EXISTING ACCENT WALL
- ⑨ PRESERVE MURAL
- ⑩ PAINT ACCENT 2 WHERE SHOWN
- ⑪ PAINT OVER PAW PRINT(S) AND PALM TREE(S)
- ⑫ PAINT ACCENT 4 WHERE SHOWN
- ⑬ PAINT NEW NEUTRAL
- ⑭ CAFETERIA: PAINT VERTICAL & HORIZONTAL SIDES OF SOFFIT ACCENT 2; PAINT INNER CEILING PORTION CEILING WHITE; PAINT EXTERIOR WALL ACCENT 2; PAINT OVER STRIPES ON ALL WALLS; PAINT STAGE FRONT BLACK. SERVING AREA: PAINT ACCENT 1 WHERE SHOWN AT WALL BETWEEN SERVING AND KITCHEN; PAINT OVER STRIPES AND PAINT ALL OTHER WALLS NEW NEUTRAL EXCEPT WHERE NOTED OTHERWISE. PAINT ALL HANDRAILS TO MATCH EXISTING.
- ⑮ PAINT ALL HOLLOW METAL FRAMES TO MATCH REMAINDER OF SCHOOL
- ⑯ SCHOOL STAFF IS RESPONSIBLE FOR TAPING OFF EXISTING MURAL PRIOR TO PAINTING
- ⑰ PAINT NEW NEUTRAL THROUGHOUT WITH SW 6924 DIRECT GREEN WHERE SHOWN
- ⑱ GYMNASIUM: PAINT ACCENT 1 THROUGHOUT; PAINT ALL SOUND PANELS ACCENT 1; PAINT CEILING AND ROOF STRUCTURE NEW NEUTRAL; PAINT OVER ALL SILHOUETTE MURALS ON SIDEWALLS;
 - ROUND DUCT: PAINT ACCENT 2; SUPPORT BANDS AND GRILLES TO MATCH DUCT
 - MURAL WALL: PRESERVE MURAL; LIONS HEAD MURAL ON LEFT – PROVIDE HARD EDGE @ TOP AND RIGHT SIDE AND DO NOT PAINT WITHIN THESE LINES;
 - CORRIDOR TO GYM: PAINT HANDRAILS TO MATCH EXISTING
- ⑲ PAINT VERTICAL & HORIZONTAL SIDES OF SOFFIT ACCENT 2
- ⑳ MEDIA CENTER: PAINT CLERESTORY STEEL ACCENT 3; PAINT ACCENT 1 WHERE SHOWN AND CONTINUE TO ALL SOFFITS AND ALL SIDE WALLS OF CLERESTORY AND EXISTING SOUND PANELS; DO NOT PAINT ANY OTHER WALL AREA; PAINT ALL HOLLOW METAL FRAMES, INSIDE & OUTSIDE, TO MATCH SCHOOL STANDARD.
- ②① PAINT THIS WALL ORANGE TO MATCH EXISTING ORANGE

MONAVIEW ES PRICING BREAKOUT DESCRIPTION (SEE BID FORM)

Scopes described below may be awarded in any combination
Scopes described below will not be awarded to multiple contractors

Base Scope

Entirety of scope described above EXCEPT for items requested as alternates.

Alternate #1: Cafeteria Ceilings

All NON-SHEETROCK ceilings in cafeteria described in scope above including decking, steel structure, and ductwork, unless otherwise noted. (Any sheetrock ceilings to be base scope, unless noted otherwise)

Alternate #2: Gymnasium Ceilings

All NON-SHEETROCK ceilings described in scope above including decking, steel structure, and ductwork, unless otherwise noted. (Any sheetrock ceilings to be base scope, unless noted otherwise)

Mobilization DEDUCT

Provide DEDUCT mobilization value to be applied should multiple scopes be awarded

NORTHWEST CRESCENT CHILD DEVELOPMENT CENTER 2024 PAINT SCOPE

- PAINT ALL PAINTABLE DOORS, FRAMES, STOREFRONTS AND MULLIONS, BOTH SIDES, THROUGHOUT FACILITY. PREPARE SURFACES FOR PROPER ADHESION PRIOR TO PAINTING.
- WHERE APPLICABLE, REPAIR ALL PRE-CAST JOINTS, MINOR BLOCK JOINTS AND SHEETROCK CRACKS WITHIN PAINTED AREAS. PATCH ALL HOLES WITHOUT SCREWS OR HANGING EQUIPMENT.
- PROTECT ALL MURALS UNLESS OTHERWISE NOTED.
- PROTECT ALL PROMETHEAN BOARDS AND PARTS. DO NOT DISASSEMBLE ANY PARTS.
- PAINT ALL PAINTABLE INTERIOR SURFACES INCLUDING CEILINGS, UNLESS OTHERWISE NOTED
- START AND STOP ALL ACCENT COLORS @ INSIDE CORNERS, UNLESS OTHERWISE NOTED
- NEW NEUTRAL = SW 7012 CREAMY
- ACCENT 1 = SW 7602 INDIGO BATIK
- ACCENT 2 = SW 6254 LAZY GRAY
- EXTERIOR:
 - PAINT ALL HOLLOW METAL DOORS AND FRAMES SW 7615 SEA SERPENT
 - PAINT ALL HANDRAILS AND FRONT ENTRY STEEL SW 7615 SEA SERPENT
 - PAINT COVERED PLAY AREA STEEL SW 7615 SEA SERPENT; ROOF DECK CEILING WHITE
 - PAINT DOWNSPOUT BOOTS SW 7615 SEA SERPENT
 - FRONT CANOPY AT STEPS PAINT STEEL AND ROOF DECK TO MATCH EXISTING
 - PAINT HEADSTART FRONT DOORS TO MATCH EXISTING
- ALL WALLS TO BE NEW NEUTRAL, UNLESS OTHERWISE NOTED
- ALL INTERIOR HOLLOW METAL FRAMES PAINT SW 6141 SOFTER TAN
- ALL INTERIOR WINDOW SILLS PAINT ADJACENT WALL COLOR
- ALL OFFICES TO BE NEW NEUTRAL, UNLESS OTHERWISE NOTED
- ALL CLASSROOMS TO BE NEW NEUTRAL WITH ACCENT 2 @ EXTERIOR WALL OR WALL OPPOSITE DOOR, UNLESS OTHERWISE NOTED
- ALL SINGLE OCCUPANT RESTROOMS TO BE NEW NEUTRAL

- ① PAINT ENTIRE SPACE ACCENT 2
- ② ACCENT 1 WHERE SHOWN (TYPICAL FOR ALL CLASSROOM INSETS)
- ③ ACCENT 1 WHERE SHOWN; PAINT HORIZONTAL AND VERTICAL SURFACES
- ④ PAINT INSIDE TRIM SW 6141 SOFTER TAN WHERE SHOWN

Plain Elementary School 2024 Paint Scope

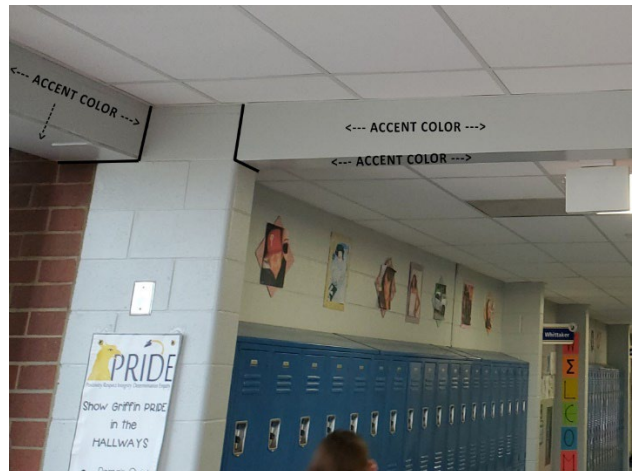
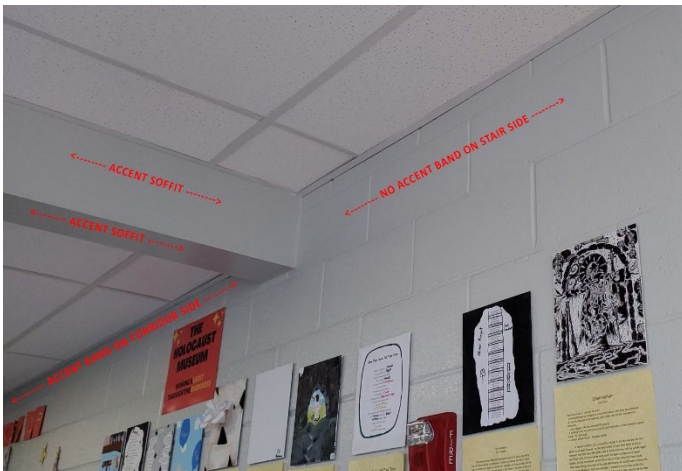
- PAINT ALL paintable doors, frames, storefronts and mullions, both sides, throughout facility. Prepare surfaces for proper adhesion prior to painting.
- Where applicable, repair all pre-cast joints, minor block joints and sheetrock cracks within painted areas. Patch all holes without screws or hanging equipment.
- Protect all murals unless otherwise noted.
- Protect all prometean boards and parts. Do not disassemble any parts.
- PAINT ALL PAINTABLE INTERIOR SURFACES INCLUDING CEILINGS, UNLESS OTHERWISE NOTED
- START AND STOP ALL ACCENT COLORS @ INSIDE CORNERS, UNLESS OTHERWISE NOTED
- NEW NEUTRAL = SW 7010 WHITE DUCK
- ACCENT 1 = SW 6247 KRYPTON
- ACCENT 2 = SW 6523 DENIM
- EXTERIOR:
 - PAINT ALL ENTRY WAY CEILINGS WHITE
 - PAINT ALL HOLLOW METAL DOORS AND FRAMES SW 7048 URBANE BRONZE
 - PAINT CANOPY STEEL AND ROOF DECK AT COVERED PLAY AREA SW 7048 URBANE BRONZE
 - PAINT FRONT ENTRY STEEL SW 7048 URBANE BRONZE
- ALL WALLS TO BE NEW NEUTRAL, UNLESS OTHERWISE NOTED
- ALL INTERIOR HOLLOW METAL FRAMES AND DOORS SW 7532 URBAN PUTTY, UNLESS OTHERWISE NOTED
- ALL OFFICES TO BE NEW NEUTRAL WITH ACCENT 1 @ WALL ACROSS DOOR, UNLESS OTHERWISE NOTED
- ALL CLASSROOMS TO BE NEW NEUTRAL WITH ACCENT 1 @ WALL ACROSS DOOR, UNLESS OTHERWISE NOTED
- ALL PODS SKYLIGHTS (5 PLCS) ACCENT 1 AT VERTICAL AND HORIZONTAL SURFACES; CEILING SURFACE CEILING WHITE
- ALL SINGLE OCCUPANT RESTROOMS TO BE NEW NEUTRAL

- ① HEALTH ROOM: ACCENT 1 @ LOW WALL AND WHERE SHOWN
- ② COVER MURAL
- ③ ACCENT 1 WHERE SHOWN; NEW NEUTRAL ON WAINSCOAT AND WALLS
- ④ PAINT DOOR AND FRAMES TO MATCH WALL COLOR
- ⑤ ACCENT 2 WHERE SHOWN
- ⑥ ACCENT 2 AT DRINKING FOUNTAIN RECESS
- ⑦ CEILING INSETS VERTICAL FACE ACCENT 1
- ⑧ ACCENT 2 AT SOFFIT VERTICAL AND HORIZONTAL SURFACES
- ⑨ AUDITORIUM (SEE DIAGRAM): ACCENT 1 AT CENTER BAYS VERTICAL SURFACES ONLY, STOP AT CEILING PLANE; COLUMNS ACCENT 2
- ⑩ GYMNASIUM: PAINT CEILING AND DUCTWORK NEW NEUTRAL; PAINT FIRST FIVE BLOCKS ACCENT 1; PAINT SIXTH BLOCK ACCENT 2; ALL ELSE NEW NEUTRAL
- ⑪ ACCENT 1 THROUGHOUT
- ⑫ NOT USED
- ⑬ NO PAINT
- ⑭ ACCENT 1 WHERE SHOWN
- ⑮ NOT USED
- ⑯ ACCENT 1 WHERE SHOWN; CONTINUE AT SOFFIT VERTICAL AND HORIZONTAL SURFACES

<p>PLAIN ES PRICING BREAKOUT DESCRIPTION (SEE BID FORM) Scopes described below may be awarded in any combination Scopes described below will not be awarded to multiple contractors</p>
<p>Base Scope Entirety of scope described above EXCEPT for items requested as alternates.</p>
<p>Alternate #1: Ceilings All NON-SHEETROCK described in scope above including decking, steel structure, and ductwork unless otherwise noted. (Any sheetrock ceilings to be base scope, unless noted otherwise)</p>
<p>Alternate #2: Gymnasium Ductwork Includes ductwork in gymnasium as described in scope above</p>
<p>Mobilization DEDUCT Provide DEDUCT mobilization value to be applied should multiple scopes be awarded</p>

Sterling School 2024 Paint Scope

- PAINT ALL PAINTABLE DOORS, FRAMES, STOREFRONTS AND MULLIONS, BOTH SIDES, THROUGHOUT FACILITY. PREPARE SURFACES FOR PROPER ADHESION PRIOR TO PAINTING.
- WHERE APPLICABLE, REPAIR ALL PRE-CAST JOINTS, MINOR BLOCK JOINTS AND SHEETROCK CRACKS WITHIN PAINTED AREAS. PATCH ALL HOLES WITHOUT SCREWS OR HANGING EQUIPMENT.
- PROTECT ALL MURALS UNLESS OTHERWISE NOTED.
- PROTECT ALL PROMETHEAN BOARDS AND PARTS. DO NOT DISASSEMBLE ANY PARTS.
- PAINT ALL PAINTABLE INTERIOR SURFACES INCLUDING CEILINGS, UNLESS OTHERWISE NOTED
- START AND STOP ALL ACCENT COLORS @ INSIDE CORNERS, UNLESS OTHERWISE NOTED
- NEW NEUTRAL = SW 7661 REFLECTION
- ACCENT 1 = SW 6247 KRYPTON
- ACCENT 2 = SW 6689 OVERJOY
- ACCENT 3 = SW 6774 FRESHWATER
- ACCENT 4 = SW 6717 LIME RICKEY
- ACCENT 5 = SW 6523 DENIM
- PAINT ALL DOWNSPOUT BOOTS TO MATCH EXISTING
- PAINT EXTERIOR CEILINGS AND LINTELS
- PAINT BOLLARDS SAFETY TRAFFIC YELLOW
- ALL WALLS TO BE NEW NEUTRAL, UNLESS OTHERWISE NOTED
- ALL INTERIOR HOLLOW METAL FRAMES AND DOORS TO MATCH EXISTING
- ALL OFFICES TO BE NEW NEUTRAL WITH ACCENT 1 @ EXISTING ACCENT OR WALL OPPOSITE DOOR (IF NO EXISTING ACCENT), UNLESS OTHERWISE NOTED
- ALL CLASSROOMS TO BE NEW NEUTRAL WITH ACCENT 1 @ EXISTING ACCENT, UNLESS OTHERWISE NOTED
- ALL SINGLE OCCUPANT RESTROOMS TO BE NEW NEUTRAL WITH ACCENT 1 @ PLUMBING WALL
- ALL CLASSROOM CORRIDORS (500, 600, 700 & 800, UNLESS OTHERWISE NOTED):
 - PAINT ACCENT STRIPE @ TOP CORRIDOR WALL; ACCENT COLOR SPECIFIED ON DIAGRAM. ACCENT @ TOP MOST PARTIAL BLOCK ONLY. CONTINUE ACCENT @ SOFFIT, PAINT VERTICAL & HORIZONTAL SURFACES. SEE PHOTOGRAPH AND SKETCH FOR WHERE TO START AND STOP ACCENT STRIPE.
 - GROUP RESTROOMS: CONTINUE ACCENT TO UNDERSIDE OF HEADER BUT NOT INTO RESTROOM
 - RECESSES @ DRINKING FOUNTAINS: PAINT INSIDE CORNER TO INSIDE CORNER, ACCENT TO MATCH STRIPE @ TOP



- ① PAINT ACCENT 1 WHERE SHOWN
- ② PAINT ACCENT 2 WHERE SHOWN
- ③ PAINT ACCENT 3 WHERE SHOWN
- ④ PAINT ACCENT 4 WHERE SHOWN
- ⑤ PAINT ACCENT 5 WHERE SHOWN
- ⑥ PAINT ACCENT WHERE SHOWN; ACCENT COLOR TO MATCH ADJACENT CORRIDOR; PAINT CONCRETE COUNTERTOPS AND SUPPORT NEUTRAL
- ⑦ PRESERVE MURAL
- ⑧ PAINT ACCENT WHERE SHOWN; ACCENT COLOR TO MATCH ADJACENT CORRIDOR
- ⑨ PAINT SOFFITS ACCENT 4, HORIZONTAL & VERTICAL SURFACES; PAINT DRINKING FOUNTAIN INSET ACCENT 4; MATCH LOCATION(S) OF EXISTING ACCENTS – PAINT ACCENT 4
- ⑩ MEDIA CENTER: SOFFITS @ CEILING = ACCENT 1, VERTICAL & HORIZONTAL SURFACES; AREA BEHIND ACOUSTICAL PANELS = ACCENT 1, VERTICAL & HORIZONTAL SURFACES, CONTINUE TO ANGLED WALL @ TOP. VERTICAL WALL ABOVE THIS ANGLED WALL TO BE NEW NEUTRAL. ALL OTHER WALLS NEUTRAL, UNLESS OTHERWISE NOTED; PRINCIPAL TO CHOOSE LOCATION OF ACCENT WALL (COLOR TO BE ACCENT 2-5 ABOVE)
- ⑪ GYMNASIUM: ALL WALLS = NEW NEUTRAL; PAINT EXISTING BLUE DUCT ACCENT 3; PAINT STAGE FRONT, STAGE BACK WALL & STAGE CEILING BLACK
- ⑫ CAFETERIA: PAINT SOFFIT ACCENT 1, VERTICAL & HORIZONTAL SURFACES; PAINT WALL BETWEEN SERVING & KITCHEN ACCENT 5;
- ⑬ PAINT OVER MURAL
- ⑭ NEUTRAL THROUGHOUT, UNLESS OTHERWISE NOTED; UPPER WINDOWS ON CONCRETE BLOCK WALL: PAINT INSETS ACCENT 3
- ⑮ STAIRWELLS: PAINT ALL STAIR COMPONENTS; STEEL TO MATCH EXISTING. PAINT CEILING @ 2ND FLOOR ACCENT 1

<p>STERLING SCHOOL PRICING BREAKOUT DESCRIPTION (SEE BID FORM)</p> <p>Scopes described below may be awarded in any combination</p> <p>Scopes described below will not be awarded to multiple contractors</p>
<p>Base Scope</p> <p>Entirety of scope described above EXCEPT for items requested as alternates.</p>
<p>Alternate #1: Ceilings</p> <p>All NON-SHEETROCK ceilings including decking, steel structure, and ductwork, unless otherwise noted. (Any sheetrock ceilings to be base scope, unless noted otherwise)</p>
<p>Mobilization DEDUCT</p> <p>Provide DEDUCT mobilization value to be applied should multiple scopes be awarded</p>

Tanglewood Middle School 2024 Paint Scope

- PAINT ALL paintable doors, frames, storefronts and mullions, both sides, throughout facility. Prepare surfaces for proper adhesion prior to painting.
- Where applicable, repair all pre-cast joints, minor block joints and sheetrock cracks within painted areas. Patch all holes without screws or hanging equipment.
- Protect all murals unless otherwise noted.
- Protect all prometean boards and parts. Do not disassemble any parts.
- PAINT ALL PAINTABLE INTERIOR SURFACES INCLUDING CEILINGS, UNLESS OTHERWISE NOTED
- START AND STOP ALL ACCENT COLORS @ INSIDE CORNERS, UNLESS OTHERWISE NOTED
- NEW NEUTRAL = SW 7012 CREAMY
- ACCENT 1 = SW 6247 KRYPTON
- ACCENT 2 = SW 9151 DAPHNE
- ACCENT 3 = SW 7602 COMMODORE
- EXTERIOR:
 - PAINT ALL HOLLOW METAL DOORS AND FRAMES TO MATCH EXISTING
- ALL WALLS TO BE NEW NEUTRAL, UNLESS OTHERWISE NOTED
- ALL INTERIOR HOLLOW METAL FRAMES AND DOORS TO MATCH EXISTING
- ALL OFFICES TO BE NEW NEUTRAL WITH ACCENT 1 @ EXISTING ACCENT WALL, UNLESS OTHERWISE NOTED
- ALL CLASSROOMS TO BE NEW NEUTRAL WITH ACCENT 1 @ EXISTING ACCENT WALL, UNLESS OTHERWISE NOTED
- ALL SINGLE OCCUPANT RESTROOMS TO BE NEW NEUTRAL
- GYMNASIUM: NEW NEUTRAL THROUGHOUT; CEILING AND DUCTWORK CEILING WHITE

- ① CAFETORIUM: NEW NEUTRAL THROUGHOUT; EXTERIOR BLUE WALL TO BE ACCENT 3; KITCHEN SERVING WALL ACCENT 1 BOTH SIDES; PAINT STAGE FRONT BLACK; LIGHTING SOFFIT AND CEILING TO BE CEILING WHITE; REMAINING SOFFIT ACCENT 1 BOTH HORIZONTAL AND VERTICAL SURFACES
- ② LOCKER ROOMS: NEW NEUTRAL THROUGHOUT; ACCENT STRIPING WHERE SHOWN - BOTTOM HALF OF TOP BLOCK ACCENT 2, NEXT FULL BLOCK ACCENT 3; PAINT EXISTING BLUE BASES ACCENT 3
- ③ ACCENT 3 AT SOFFIT FOR VERTICAL FACE ONLY AT INSET; OTHER HORIZ AND VERT SURFACES CEILING WHITE; SEE PHOTO
- ④ ACCENT 2 WHERE SHOWN
- ⑤ PRESERVE MURAL
- ⑥ ACCENT 1 WHERE SHOWN
- ⑦ ACCENT 3 WHERE SHOWN
- ⑧ PRINCIPAL'S OFFICE: EXISTING ACCENT WALL TO BE ACCENT 3; ALL OTHER WALLS ACCENT 1
- ⑨ PAINT HORIZONTAL AND VERTICAL SURFACES ACCENT 2; CONTINUE ACCENT 2 TO UNDERSIDE OF ROOF DECK
- ⑩ GREEN SCREEN WHERE SHOWN
- ⑪ FRONT OFFICE SOFFIT: ACCENT 1 AT CURVED SOFFIT HORIZ AND VERT; ACCENT 1 AT HORIZ LIGHTING SURFACE; ALL OTHER SOFFIT CEILING WHITE

TANGLEWOOD MS PRICING BREAKOUT DESCRIPTION (SEE BID FORM)

Scopes described below may be awarded in any combination
Scopes described below will not be awarded to multiple contractors

Base Scope

Entirety of scope described above EXCEPT for items requested as alternates.

Alternate #1: Ceilings

All NON-SHEETROCK ceilings including decking, steel structure, and ductwork, unless otherwise noted. (Any sheetrock ceilings to be base scope, unless noted otherwise)

Mobilization DEDUCT

Provide DEDUCT mobilization value to be applied should multiple scopes be awarded

Travelers Rest High School 2024 Paint Scope

- PAINT ALL PAINTABLE DOORS, FRAMES, STOREFRONTS AND MULLIONS, BOTH SIDES, THROUGHOUT FACILITY. PREPARE SURFACES FOR PROPER ADHESION PRIOR TO PAINTING.
- WHERE APPLICABLE, REPAIR ALL PRE-CAST JOINTS, MINOR BLOCK JOINTS AND SHEETROCK CRACKS WITHIN PAINTED AREAS. PATCH ALL HOLES WITHOUT SCREWS OR HANGING EQUIPMENT.
- PAINT OVER ALL MURALS EXCEPT WHERE NOTED.
- PROTECT ALL PROMETHEAN BOARDS AND PARTS. DO NOT DISASSEMBLE ANY PARTS.
- PAINT ALL PAINTABLE CORE INTERIOR SURFACES INCLUDING CEILINGS, UNLESS OTHERWISE NOTED
- START AND STOP ALL ACCENT COLORS @ INSIDE CORNERS, UNLESS OTHERWISE NOTED
- NEW NEUTRAL = SW 9166 DRIFT OF MIST
- ACCENT 1 = SW 6526 ICELANDIC
- ACCENT 2 = SW 6241 ALEUTIAN
- ACCENT 3 = SW 6966 BLUEBLOOD
- ACCENT 4 = SW 6907 FORSYTHIA
- ACCENT 5 = SW 7073 NETWORK GRAY
- COLOR 6 = SW 7043 WORLDLY GRAY
- EXTERIOR:
 - PAINT ALL HOLLOW METAL DOORS AND FRAMES COLOR 6
 - PAINT ALL PAINTED HANDRAILS ACCENT 3, INCLUDING ALL AT ATHLETIC FACILITIES
- ALL INTERIOR HOLLOW METAL FRAMES AND DOORS TO BE COLOR 6
- ALL WALLS TO BE NEW NEUTRAL, UNLESS OTHERWISE NOTED
- 1ST FLOOR CLASSROOM CORRIDORS: 3 STRIPES: TOP 4" = ACCENT 5; NEXT 4" = ACCENT 4; NEXT 8" = ACCENT 3
- 2ND FLOOR CLASSROOM CORRIDORS: FULL BLOCK/8" ABOVE DOOR HEAD TO BE ACCENT 3; 4" ABOVE TO BE ACCENT 4; 4" ABOVE TO BE ACCENT 5; SEE PHOTOGRAPH 4
- LOWER LEVEL CLASSROOM CORRIDORS: 3 STRIPES: TOP 4" = ACCENT 5; NEXT 4" = ACCENT 4; NEXT 8" = ACCENT 3
- RESTROOMS ON 1-5 WINGS, ALL 3 FLOORS: ACCENT 3 WHERE SHOWN; WRAP CORRIDOR STRIPES ONTO FIRST INSIDE CORNER
- RESTROOMS ON 10-15 WINGS, ALL 3 FLOORS: ACCENT 4 WHERE SHOWN; WRAP CORRIDOR STRIPES ONTO FIRST INSIDE CORNER
- ATHLETIC FACILITIES:
 - TICKET BOOTH ADJACENT TO PARKING LOT: PAINT INSIDE NEW NEUTRAL;
 - BOTH CONCESSIONS AND RESTROOM BUILDINGS: PAINT INSIDE NEW NEUTRAL; PAINT ACCENT 3 STRIPE BETWEEN WINDOWS ON BOTH SMOOTH PRECAST SIDES, WRAP AROUND PRECAST TO INSIDE CORNER; PAINT 8" BAND OF ACCENT 4 ABOVE BLUE STRIPE; SEE PHOTOGRAPH 1
 - RESTROOM INTERIORS: PAINT 13TH BLOCK ACCENT 3; PAINT BOTTOM 3" OF 14TH BLOCK ACCENT 4; NEW NEUTRAL ALL ELSE; PAINT CEILING AND PRECAST DOUBLE TS WHITE
 - SOFTBALL DUGOUT: PAINT EXISTING BLUE FACIA ACCENT 3; PAINT EXISTING BROWN STRIPE ACCENT 4
 - BASEBALL PRESSBOX: PAINT DOOR AND FRAME TO MATCH EXISTING
 - BASEBALL DUGOUT: PAINT EXISTING BLUE TRIM ACCENT 3; PAINT EXISTING BROWN STRIPE ACCENT 4
 - FOOTBALL PRESSBOX: PAINT EXTERIOR DOORS & FRAMES TO MATCH EXISTING; PAINT INTERIOR FRAMES BLACK; DO NOT PAINT WALLS

- 1) NOT USED
- 2) PAINT EXISTING BRICK WALLS WITH HORIZONTAL STRIPES, ACCENTS 1-4 AS SHOWN IN PHOTOGRAPH 2; PREP PRECAST PANELS FOR PROPER ADHESION
- 3) NOT USED
- 4) PAINT RAILING COLOR 6
- 5) STAIRWELL SCHEME: ALL RAILINGS AND STAIR STEEL ACCENT 3; PAINT WALL @ LANDING, AT EACH LANDING: TOP 4" ACCENT 5, NEXT 4" ACCENT 4, NEXT 8" ACCENT 3, REMAINDER OF THIS WALL ACCENT 5; SEE DIAGRAM 1 BELOW
- 6) PAINT VERTICAL SURFACES OF LIGHTWELLS ACCENT 1; ALL OTHER PAINTABLE CEILINGS TO BE CEILING WHITE; PAINT ROUND COLUMNS ACCENT 3
- 7) GYMNASIUM: COVER MURALS; PAINT ACOUSTICAL PANELS NEW NEUTRAL; PAINT CEILING TO MATCH WALL COLOR; ACCENT 3 TO MATCH EXTENTS OF EXISTING BLUE. ACCENT 4 AT STRUCTURAL STEEL @ CEILING ONLY, TWO SIDES OF GYM, SEE PHOTOGRAPH 5
- 8) COVER MURALS; PAINT CEILING; PAINT NEUTRAL THROUGHOUT; 13TH BLOCK ACCENT 3, AROUND ENTIRE SPACE; 14TH BLOCK, BOTTOM HALF ACCENT 4
- 9) ACCENT KITCHEN SERVING WALL ACCENT 2 BOTH SIDES
- 10) PAINT CMU WALLS COLOR 6; PAINT CEILING AND EDGE OF PRECAST CEILING ONLY
- 11) ATHLETIC CORRIDORS: ALL DRYWALL SOFFIT ACCENT 1; ACCENT STRIPE THROUGHOUT ALL CORRIDORS: TOP BLOCK, TOP HALF ACCENT 5; BOTTOM HALF OF TOP BLOCK ACCENT 4; NEXT BLOCK ACCENT 3
- 12) NEW NEUTRAL THROUGHOUT; ACCENT WHERE SHOWN: TOP 4", ACCENT 5, NEXT 4" ACCENT 4, NEXT 8" ACCENT 3; REMAINDER OF WALL ACCENT 5; PRESERVE EXISTING YELLOW WITH BLUE LETTERING
- 13) NEW NEUTRAL THROUGHOUT, INCLUDING ACOUSTICAL PANELS; BELOW ACOUSTICAL PANELS: TOP 4", ACCENT 5, NEXT 4" ACCENT 4, NEXT 8" ACCENT 3
- 14) NEW NEUTRAL THROUGHOUT; LOCKER BASES ACCENT 5; ACCENT STRIPE THROUGHOUT: TOP 4", ACCENT 5, NEXT 4" ACCENT 4, NEXT 8" ACCENT 3
- 15) NEW NEUTRAL THROUGHOUT; LOCKER BASES ACCENT 5
- 16) THEATRE STORAGE AREA: PAINT ALL FRAMES AND DOORS TO MATCH REMAINDER OF SCHOOL; STAGE – PAINT ALL WALLS BLACK; PAINT STAGE-SIDE OF ALL DOORS BLACK, INCLUDING FRAMES; PAINT STAGE FLOOR BLACK
- 17) AUDITORIUM: PAINT EXISTING WHITE SOUND PANELS BLACK; PAINT ALL NEUTRAL WALLS NEW NEUTRAL; PAINT LIGHT BLUE ACCENT 1; MEDIUM BLUE ACCENT 2; DARK BLUE 3; ALL WALLS WITH ALUMINUM REGLETS – DO NOT PAINT THESE, KEEP AS EXPOSED SILVER; PAINT ALL SOUND BOOTH WALLS BLACK
- 18) NOT USED
- 19) GUIDANCE SUITE: PAINT NEW NEUTRAL THROUGHOUT; PAINT EXISTING BLUE WALL ACCENT 5; PAINT ACCENT 3 WHERE SHOWN
- 20) MUSIC ROOMS: PAINT ALL INSULATION-TYPE CEILING MATERIAL BLACK; PAINT WALLS NEUTRAL THROUGHOUT; PAINT ACCENT 3 WHERE SHOWN, FLOOR TO CEILING; PAINT ALL PAINTABLE WALL MOUNTED SOUND BAFFLES WHITE
- 21) FRONT LOBBY: PAINT EXISTING BLUE WALL ACCENT 3. PAINT OVER DEVILDOG MURAL – THIS WALL TO BE ACCENT 3. WING WALL TO THE LEFT TO BE ACCENT 4, ALL 3 SIDES
- 22) DRYWALL CEILING @ 2ND FLOOR CORRIDOR AND MAIN ENTRYWAY: HIGHEST DRYWALL TO BE ACCENT 1; LOWER DRYWALL SECTION TO BE ACCENT 2
- 23) MEDIA CENTER: PAINT EXISTING BLUE ACCENTS ACCENT 3; PAINT ACCENT WHERE SHOWN, ACCENT 2; DRYWALL BAND @ HIGH CEILING TO BE ACCENT 4
- 24) GROUP TOILETS @ COMMONS AREA: NEW NEUTRAL THROUGHOUT; ACCENT STRIPE THROUGHOUT: TOP 4", ACCENT 5, NEXT 4" ACCENT 4, NEXT 8" ACCENT 3

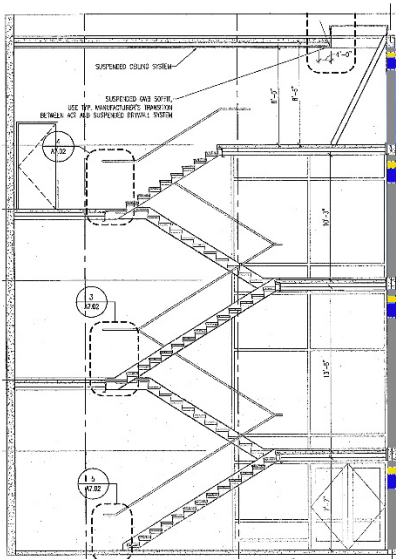
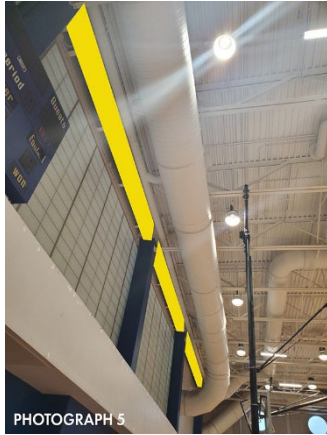


DIAGRAM 1

TRAVELERS REST HS PRICING BREAKOUT DESCRIPTION (SEE BID FORM)

Scopes described below may be awarded in any combination
Scopes described below will not be awarded to multiple contractors

Base Scope

Entirety of scope described above EXCEPT for items requested as alternates.

Alternate #1: Ceilings

All NON-SHEETROCK ceilings described in scope above including decking, steel structure, and ductwork, unless otherwise noted. (Any sheetrock ceilings to be base scope, unless noted otherwise or those in Alternate #2)

Alternate #2: Corridor Ceilings

Includes drywall ceilings at 2nd floor corridor and main entryway as described above

Alternate #3: Music Rooms

Includes music rooms as described in scope above

Alternate #4: Athletic Facilities

Includes all exterior athletic facilities as described above

Mobilization DEDUCT

Provide DEDUCT mobilization value to be applied should multiple scopes be awarded

Wade Hampton High School 2024 Paint Scope – CORE SPACES

- PAINT ALL paintable doors, frames, storefronts and mullions, both sides, throughout facility. Prepare surfaces for proper adhesion prior to painting.
- Where applicable, repair all pre-cast joints, minor block joints and sheetrock cracks within painted areas. Patch all holes without screws or hanging equipment.
- Protect all murals unless otherwise noted.
- Protect all promethean boards and parts. Do not disassemble any parts.
- PAINT ALL PAINTABLE INTERIOR SURFACES INCLUDING CEILINGS, UNLESS OTHERWISE NOTED
- START AND STOP ALL ACCENT COLORS @ INSIDE CORNERS, UNLESS OTHERWISE NOTED
- DO NOT PAINT SINGLE OCCUPANT RESTROOMS
- DO NOT PAINT CLASSROOMS, UNLESS OTHERWISE NOTED
- DO NOT PAINT OFFICES, UNLESS OTHERWISE NOTED
- INCLUDING PAINTING OF ATHLETIC WING - ALL SPACES INCLUDING OFFICES (SEE DIAGRAM)
- NEW NEUTRAL = SW 7661 REFLECTION
- ACCENT 1: SW 6871 Positive Red
- ACCENT 2: SW 7073 Network Gray Mid gray
- ACCENT 3: SW 6257 Gibraltar Dark gray
- ACCENT 4: SW 7663 Monorail Silver Light gray
- PE106: All walls = SW 7073 Network Gray
- Cafeteria:
 - All walls = new neutral
 - Soffit: new red @ insets, to match existing extents; rectangular soffit between angled ceilings: inside vertical face to be SW 6257 Gibraltar
 - Preserve murals @ slanted ceilings
- Kitchen:
 - New neutral throughout, including over existing W, H, red and black accents
 - (4) ceiling soffits - paint interior vertical face SW 6871 Positive Red to match cafeteria
 - Accent SW 7073 Network Gray where shown
 - All handrails to be black
- Group toilets @ cafeteria:
 - All walls = new neutral except as noted below
 - Add accent to top block around entire room; accent = SW 6871 Positive Red
 - Accent wall shown, inside corner to inside corner; accent = SW 6257 Gibraltar
- Auditorium:
 - Paint stage floor black
 - Existing dark gray walls to be SW 7073 Network Gray (including ceiling in this area)
 - All other auditorium walls = new neutral
 - ADA ramp: handrail & mesh panels = SW 7073 Network Gray
- Group toilets on related arts corridor, new neutral throughout
- Corridor serving FA102 - FA 107:
 - New neutral throughout
 - All insets to classrooms = SW 7073 Network Gray
- Health suite:
 - Paint new neutral throughout

- Add accent where shown; accent = SW 7073 Network Gray
- Do not paint offices or restrooms
- Insets to classrooms on 100, 200 & 300 Corridors: Inside corner to inside corner; accent = SW 7073 Network Gray
- Front office & admin suite
 - All walls = new neutral unless noted otherwise
 - Wall behind reception desk = SW 7073 Network Gray
 - Do not paint offices
- Corridor accent where shown; accent = SW 7663 Monorail Silver
- EXTERIOR:
 - PAINT ALL HOLLOW METAL DOORS AND FRAMES TO MATCH EXISTING
- ATHLETIC FACILITIES (ON CAMPUS)
 - PAINT ALL HOLLOW METAL DOORS AND FRAMES TO MATCH EXISTING
 - PAINT ALL HANDRAILS TO MATCH EXISTING
 - PAINT STORAGE BUILDING EXTERIOR NEW NEUTRAL
 - PAINT ALL OTHER BUILDINGS ACCENT 2 AT LOWER 5 BLOCKS; ACCENT 1 NEXT BLOCK UP; ACCENT 3 NEXT BLOCK UP; ACCENT 2 REMAINING INCLUDING PAINTABLE UPPER TRIM
 - PRESERVE SHIELD MURAL AT RESTROOM BUILDING – TERMINATE ACCENT STRIPING AT MURAL AT ANGLE TO CREATE DIAMOND BORDER; COVER GENERAL LETTERING
 - RESTROOMS NEW NEUTRAL; UPPER TRIM PIECE ACCENT 3; PARTIAL BLOCK ACCENT 1
- ATHLETIC FACILITIES (OFF CAMPUS)
 - PRESSBOX - ACCENT 2 AT LOWER 5 BLOCKS; ACCENT 1 NEXT BLOCK UP; ACCENT 3 NEXT BLOCK UP; ACCENT 2 REMAINING INCLUDING UPPER SECTION
 - SOFTBALL DUGOUTS – PAINT FACIA ACCENT 2; TOP BLOCK ACCENT 2; NEXT BLOCK ACCENT 3; NEXT BLOCK ACCENT 1; ALL ELSE BELOW ACCENT 2; COVER MURAL
 - BASEBALL DUGOUTS - PAINT FACIA ACCENT 2; TOP BLOCK ACCENT 2; NEXT BLOCK ACCENT 3; NEXT BLOCK ACCENT 1; ALL ELSE BELOW ACCENT 2; COVER MURAL

① Gymnasium

- Paint everything @ ceiling plane including structure, ductwork & decking;
- Existing red walls = SW 6871 Positive Red
- Existing white walls = SW 7073 Network Gray

② Main Athletic Corridor between Gymnasium & PE106:

- All walls, except as noted below: SW 7663 Monorail Silver
- Corridor wall adjacent to PE106 (from exterior door to exterior door, wrapping corner): 1st 6 courses = SW 7073 Network Gray; 7th course = SW 6871 Positive Red; all other courses = SW 7663 Monorail Silver
- All GWB soffits over doors in these corridors: horizontal and vertical surface(s) to match adjacent wall color
- (3) exterior door walls & (1) door entering commons: SW 6871 Positive Red, inside corner to inside corner (walls only)
- Door insets to multi-purpose room, auxiliary gym and (2) locker rooms across the hall: SW 6871 Positive Red, inside corner to inside corner (walls only)
- Inset @ drinking fountain = SW 6871 Positive Red

③ All walls new neutral with accent 2 where shown; If accent wall is not identified on plan, paint new accent on existing accent wall – NO PAINT IF CLASSROOM, UNLESS ON ATHLETIC WING

④ Locker Rooms

- Paint all paintable ceilings ceiling white
- All walls = SW 7663 Monorail Silver
- All concrete countertops & concrete locker bases = SW 7073 Network Gray

⑤ Aux Gym & Multipurpose Room Bottom stripe = SW 7073 Network Gray

- Red stripe = SW 6871 Positive Red
- All other wall surfaces = new neutral
- Paint everything @ ceiling plane including structure, ductwork & decking

⑥ PE118 All walls = SW 7663 Monorail Silver

⑦ Do not paint

⑧ Soffit: Paint interior vertical face of soffit SW 6257 Gibraltar

⑨ Soffit: Paint horizontal & vertical faces of soffit SW 7073 Network Gray

⑩ Group toilets on classroom corridors:

- Drinking fountain insets, inside corner to inside corner = SW 6871 Positive Red
- Accent wall where shown = SW 7073 Network Gray

⑪ Media Center (INCLUDE OFFICES & ROOMS):

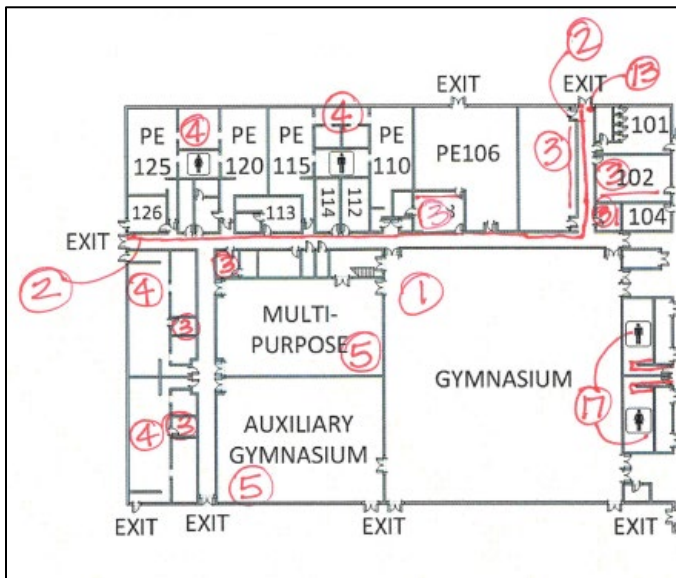
- Cover murals @ soffit
- All walls = SW 7663 Monorail Silver except as noted below
- Existing dark gray wall = SW 6257 Gibraltar
- Accent where shown = SW 7073 Network Gray

- Soffit above circulation desk:
 - Vertical & horizontal surfaces = SW 6871 Positive Red
 - All other soffits to be ceiling white
- Paint existing accent wall in office SW 7073 Network Gray

⑫ Guidance Suite: All walls new neutral except as noted below:

- Existing accent wall with gray/red angled line: match pattern with new colors (Network Gray & Positive Red)
- All offices NO PAINT
- Accent = SW 7663 Monorail Silver where shown
- Steel @ fire shutter: paint to match adjacent wall color

⑬ Accent inside corner to inside corner, Accent = SW 6871 Positive Red



Athletic Wing

WADE HAMPTON HS PRICING BREAKOUT DESCRIPTION (SEE BID FORM)

Scopes described below may be awarded in any combination

Scopes described below will not be awarded to multiple contractors

Base Scope

Entirety of scope described above EXCEPT for items requested as alternates.

Alternate #1: Ceilings

All NON-SHEETROCK ceilings described in scope above including decking, steel structure, and ductwork, unless otherwise noted. (Any sheetrock ceilings to be base scope, unless noted otherwise)

Alternate #2: Athletic Wing Classrooms

Includes all classrooms & offices within Athletic Wing (Core spaces within athletic wing to be in base scope)

Alternate #3: On Campus Athletic Facilities

Includes all on campus athletic facilities described above

Alternate #4: Off Campus Athletic Facilities

Includes all off campus athletic facilities described above

Mobilization DEDUCT

Provide DEDUCT mobilization value to be applied should multiple scopes be awarded

WESTCLIFFE ELEMENTARY SCHOOL 2024 PAINT SCOPE

- PAINT ALL PAINTABLE DOORS, FRAMES, STOREFRONTS AND MULLIONS, BOTH SIDES, THROUGHOUT FACILITY. PREPARE SURFACES FOR PROPER ADHESION PRIOR TO PAINTING.
- WHERE APPLICABLE, REPAIR ALL PRE-CAST JOINTS, MINOR BLOCK JOINTS AND SHEETROCK CRACKS WITHIN PAINTED AREAS. PATCH ALL HOLES WITHOUT SCREWS OR HANGING EQUIPMENT.
- PROTECT ALL MURALS UNLESS OTHERWISE NOTED.
- PROTECT ALL PROMETHEAN BOARDS AND PARTS. DO NOT DISASSEMBLE ANY PARTS.
- PAINT ALL PAINTABLE INTERIOR SURFACES INCLUDING CEILINGS, UNLESS OTHERWISE NOTED
- START AND STOP ALL ACCENT COLORS @ INSIDE CORNERS, UNLESS OTHERWISE NOTED
- NEW NEUTRAL = SW 7010 WHITE DUCK
- ACCENT 1 = SW 6531 INDIGO
- ACCENT 2 = SW 6242 BRACING BLUE
- ACCENT 3 = SW 6247 KRYPTON
- EXTERIOR:
 - PAINT ALL LINTELS SW 6075 GARRET GRAY
 - PAINT ALL HOLLOW METAL DOORS, FRAMES, AND HANDRAILS SW 6075 GARRET GRAY
 - PAINT PREVIOUSLY PAINTED CANOPY COLUMNS AND STEEL SW 6075 GARRET GRAY
 - PAINT KINDERGARTEN PLAY AREA CEILING WHITE
- PAINT ALL PREVIOUSLY PAINTED STOREFRONT SW 6075 GARRET GRAY
- PAINT MAIN ENTRY CORRIDOR ROOF DECK AND STEEL CEILING WHITE
- ALL WALLS TO BE NEW NEUTRAL, UNLESS OTHERWISE NOTED
- ALL GYPSUM CEILINGS TO BE CEILING WHITE
- ALL INTERIOR HOLLOW METAL FRAMES AND DOORS SW 6075 GARRET GRAY
- ALL OFFICES TO BE NEW NEUTRAL, UNLESS OTHERWISE NOTED
- ALL CLASSROOMS TO BE NEW NEUTRAL WITH ACCENT 1 @ TEACHING WALL, UNLESS OTHERWISE NOTED
- ALL SINGLE OCCUPANT RESTROOMS TO BE NEW NEUTRAL

- ① SW 6924 DIRECT GREEN WHERE SHOWN
- ② PAINT SOFFIT VERTICAL & HORIZONTAL SURFACES ACCENT 2
- ③ PRESERVE MURAL
- ④ ACCENT 3 WHERE SHOWN
- ⑤ PAINT SPACE NEW NEUTRAL
- ⑥ ACCENT 2 WHERE SHOWN; START AND STOP @ INSIDE CORNERS; PAINT HORIZONTAL AND VERTICAL SURFACES
- ⑦ PRESERVE MURAL; PAINT AS CLOSE TO EXISTING ROUND MURAL
- ⑧ PRESERVE MURAL; CREATE VERTICAL HARD EDGE AT BOTH SIDES
- ⑨ FRONT OFFICE: PAINT BLOCK WALLS ACCENT 3
- ⑩ GYMNASIUM: ALL VERTICAL SURFACES NEW NEUTRAL; EXISTING BLUE BAND PAINT ACCENT 1; PAINT CEILING AND DUCTWORK CEILING WHITE
- ⑪ NOT USED
- ⑫ PAINT ALL PREVIOUSLY PAINTED STOREFRONT SW 6075 GARRET GRAY
- ⑬ PAINT SOFFIT VERTICAL & HORIZONTAL ACCENT 1
- ⑭ ACCENT 2 WHERE SHOWN; START & STOP AT INSIDE CORNERS

WESTCLIFFE ES PRICING BREAKOUT DESCRIPTION (SEE BID FORM)

Scopes described below may be awarded in any combination
Scopes described below will not be awarded to multiple contractors

Base Scope

Entirety of scope described above EXCEPT for items requested as alternates.

Alternate #1: Ceilings

All NON-SHEETROCK ceilings described in scope above including decking, steel structure, and ductwork unless otherwise noted. (Any sheetrock ceilings to be base scope, unless noted otherwise)

Alternate #2: Exterior

Includes previously painted canopy columns and steel (all other exterior is base scope)

Alternate #3: Painted Storefront

Includes painting of all previously painted storefront described in scope above

Mobilization DEDUCT

Provide DEDUCT mobilization value to be applied should multiple scopes be awarded